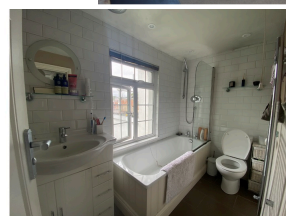


£1,100 PCM



£1,100 PCM

Features

- Original Oak Beams
- Feature Fireplace
- Off Road Parking
- Few minutes walk to Burgess Hill Train Station
- Quiet no through lane

Description

Sussex Letting Centre are delighted to offer a charming period cottage located in a quiet lane between Mill Road and Grove Road and only a few minutes walk to the train station.

The property benefits from off road parking to the front and comprises of entrance porch, lounge/dining room with original oak beams and feature fireplace , cottage style kitchen, wooden stairs (due to have bannisters fitted,) leading to a double bedroom with fitted wardrobes, small single bedroom/study, bathroom with shower over bath, lovely mature rear garden with shed.

Available mid July. Unfurnished. Council tax band C.