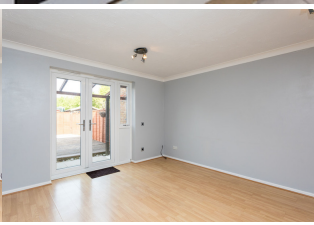
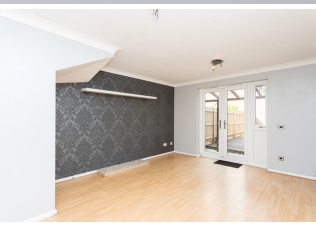


£1,050 PCM





£1,050 PCM



Features

- Downstairs WC
- Two Allocated Parking spaces
- Easy access to the A23
- Low Maintenance garden

Description

Sussex Letting Centre are delighted to offer to the market this well maintained two bedroom terraced home situated on the popular Western side of town, offering easy access to the A23, St Paul's College and the Triangle Leisure Centre.

The property comprises of Entrance hall, downstairs cloakroom, open planed living/dining room with patio doors leading out to the rear garden, modern kitchen with appliances, two double bedrooms, one with fitted wardrobe, modern bathroom, two allocated parking spaces. Unfurnished. Available now. Sorry no pets allowed.

£1,050 PCM



Floor Plan

Ground Floor

Approx. 28.9 sq. metres (310.6 sq. feet)



First Floor

Approx. 28.9 sq. metres (311.3 sq. feet)

